

MACLEAY VALLEY TRAVEL PTY. LTD.

33 Smith Street, Kempsey
NSW 2440
Australia

Email: info@macleayvalleytravel.com
Website: www.macleayvalleytravel.com

Telephone (02) 6562-6699
Toll Free 1800 81-0809
Fax (02) 6562-6276



GREECE TOUR WITH MEDITERRANEAN CRUISE

18 Day Conducted Tour
for **\$8,765** per person twin share
This price includes airport taxes & levies

This price includes all of the following:

- Economy Class air fares from Sydney, Melbourne and Brisbane into Athens, Greece and out of Barcelona, Spain with Emirates.
- An 8 day land tour of Greece, visiting the impressive archaeological sites of Olympia and Delphi, as well as four nights in the capital Athens and taking in the Byzantine Monasteries of Meteora.
- A 7 day Mediterranean cruise from Athens to Barcelona aboard the Sun Princess, one of Princess cruises newest and grandest ships. The cruise visits the Greek islands of Mykonos and Corfu, as well as the Balkan town of Bar, Montenegro and Italian island of Sicily.
- A day tour of Barcelona, Spain, with an included visit to the impressive Sagrada Familia.
- Very good accommodation, mainly 3½ to 4½ star with private facilities.
- Meals, as stated in the itinerary and all meals onboard the cruise.
- Prepaid gratuities for the guide & driver in Greece, but not on the cruise.
- Transport, transfers and entrance fees to many attractions.
- Services of local tour guides and an Australian tour escort.

Your onboard accommodation on the cruise is based on Inside cabins.

Upgrade costs are listed below:

Ocean View cabin: From \$240 per person twin share

Balcony cabin: From \$550 per person twin share.

For a single room there is an extra cost of \$3,755 per person, based on an inside cabin.

You can also upgrade to 'Princess Plus' including free drinks and WiFi onboard from \$455 per person



Tour departs Australia 26th September and returns 13th October 2025

We try harder to find you the best travel deal

Itinerary for Greece Tour with Mediterranean Cruise

Included meals are indicated as B = Breakfast, L = Lunch, D = Dinner

26.09.25 Australia – Dubai – Athens, Greece

Depart Brisbane at 01.55am on Emirates flight EK 431, arriving in Dubai at 10.05am. Depart Melbourne at 5.15am on Emirates flight EK 409, arriving in Dubai at 1.05pm. Depart Sydney at 6.00am on Emirates flight EK 415, arriving in Dubai at 2.10pm. All passengers depart Dubai at 4.20pm on EK 103, arriving in Athens, Greece at 8.25pm. Upon arrival we are transferred to our hotel for a three night stay. Accommodation: Novotel Athens or similar

27.09.25 Athens

(B/D)

After breakfast we enjoy a city tour of Athens. We pass by Syntagma Square, the Memorial to the Unknown Soldier, the Athens Academy, the University, the National Library, Hadrian's Arch, the Temple of Olympian Zeus and the Panathenaic Stadium where the first Olympic Games of the modern era took place in 1896. Afterwards we visit the Acropolis Museum and the famous Acropolis Site, with entrance fees included. At the conclusion of the tour we are returned to the hotel. The remainder of the day is at leisure. Dinner this evening is included at the hotel. Accommodation: Novotel Athens or similar

28.09.25 Athens

(B/D)

Today is at leisure in Athens, the capital and largest city in Greece. It was also the heart of Ancient Greece. The city is dominated by 5th century BC landmarks, including the Acropolis. This evening we have an included dinner at the hotel. Accommodation: Novotel Athens or similar

29.09.25 Athens – Corinth Canal – Epidaurus - Nafplio

(B/D)

We leave Athens behind and head west to the strategically important Corinth Canal, our first stop for the day. We then continue to Epidaurus and visit the Ancient Theatre, world famous for its outstanding acoustics. Following this we proceed to the beautiful seaport town of Nafplio. The remainder of the afternoon is free for walking around the old town. You may wish to visit the Nafplio Gallery of Art, with paintings of famous Greek artists dedicated to the Greek revolution. Dinner this evening is included. Accommodation: Grande Bretagne Hotel or similar

30.09.25 Nafplio – Mycenae - Olympia

(B/D)

This morning we travel to Mycenae to visit this archaeological site. Here we can learn about classical Greek culture as we walk through the grounds, consisting of a fortified acropolis and surrounding funerary sites, such as the Tomb of Agamemnon. In the afternoon we depart for Olympia for an overnight stay. Olympia is home to the original Olympic Games. Dinner this evening is included. Accommodation: Olympion Asty Hotel or similar

01.10.25 Olympia – Patras - Delphi

(B/D)

After breakfast we set off to visit the archaeological site of Olympia, with the Temple of Zeus, Temple of Hera, the altar of the Olympic flame, the Stadium and the museum. Here we can learn more about the history of the Olympic games.

In the afternoon we drive north towards Patras, the capital of the Peloponnese and the west coast's largest port. We then pass by the city of Nafpaktos en route to Delphi. Dinner this evening is included.
Accommodation: Hotel Amalia or similar

02.10.25 Delphi – Kalabaka area

(B/D)

We rise early today to visit the archaeological site of Delphi, listed as a UNESCO World Heritage Site. On the slopes of Mt Parnassus, lie the ruins of the Sanctuary of Apollo, Pythios. We head into the museum to discover numerous artifacts and relics that date back to the 15th century BC. Following this we continue to Kalabaka, via Central Greece, for an overnight stay. Dinner this evening is included.
Accommodation: Grand Meteora Hotel or similar

03.10.25 Kalabaka – Meteora – Thermopylae - Athens

(B/D)

This morning we visit The Holy Monastery of Great Meteoro to see the impressive, gigantic rocks, reaching heights of more than 600 metres. The Greek word 'Meteora' means 'suspended in the air' and this phrase aptly describes these remarkable Greek Orthodox monasteries. The area is home to more than 20 Byzantine rock monasteries. We return to Athens late in the afternoon, passing the heroic monument of Leonidas at Thermopylae. Dinner this evening is included.
Accommodation: The Athenian Callirhoe Hotel or similar

04.10.25 Athens – Piraeus Cruise Terminal - Embark on Sun Princess

(B/D)

This morning is at leisure in Athens. We check out of our hotel at the standard time. After this we can leave our luggage at the hotel until our midday transfer to the cruise terminal to board the Sun Princess. Ship departs Athens at 7pm.
Sun Princess is the most impressive, luxurious and stunning Love Boat ever created and introduces an innovative ship platform designed exclusively for the world's most iconic cruise brand. With spacious yet intimate venues, it debuts new architectural elements including The Dome, a groundbreaking geodesic, glass-enclosed structure at the top of the ship inspired by the terraces of Santorini. The outward and suspended Sphere, the namesake of this new class of ship, takes the central Piazza hub of the ship into a new dimension. Guests are enveloped with expansive ocean views and an open concept, inspired to deliver the desired lifestyle of relaxed indoor and outdoor living. Mesmerizing shows and engaging activities are found all over the ship, highlighted by transformational entertainment venues. The Princess Arena, the most technologically advanced Princess Theatre design, has three configurations to maximize sight lines and deliver a truly captivating experience. With a pool by sunlight and a stage for shows by starlight, the glass-enclosed Dome, inspired by the hills of Santorini, features acrobatic performances created in partnership with the renowned Cirque Éloize. With 30 inviting restaurant and bar venues and an unprecedented collection of celebrity collaborators, high-end ingredients and culinary experiences. Highlights include Love by Britto, an artistic-inspired dining experience celebrating love, in partnership with Romero Britto, The Butcher's Block by Dario, in partnership with the world's most famous butcher, Dario Cecchini, Makoto Ocean, in partnership with Master of Edomae-style sushi Makoto Okuwa, and Umai Teppanyaki, where world-class cuisine intertwines with captivating performance.
Accommodation: Onboard

05.10.25 Cruising - Mykonos

(B/L/D)

Arrive on the Greek Island of Mykonos at 7am, departing at 7pm.

Mykonos is popular for its stunning beaches, crystal-clear waters, and vibrant nightlife. The island's charming whitewashed buildings and narrow streets add to its allure. The township features hip boutiques, restaurants, jewellery stores, souvenirs, taverns and cafés. The island's famed windmills are found just south of the waterfront.
Accommodation: Onboard

06.10.25 **Cruising – At sea**
(B/L/D) Accommodation: Onboard

07.10.25 **Cruising - Bar, Montenegro**
(B/L/D) Arrive in Bar at 7.30am, departing at 5pm.
Cruises to Bar, Montenegro bring you close to all kinds of unique wonders. Nestled along the Adriatic Sea, this underrated port brims with rich history and stunning natural beauty. Its picturesque coastal views, pristine beaches and well-preserved historical sites easily make it one of the region's best-kept secrets. Discover ancient fortresses, charming streets and a lively waterfront promenade. The town's shopping area is within walking distance of the pier.
Accommodation: Onboard

08.10.25 **Cruising - Corfu, Greece**
(B/L/D) Arrive on the Greek Island of Corfu at 7am, departing at 4pm.
The lush and verdant island of Corfu lies in the Ionian Sea, midway between Greece and Italy. The island has a long and colourful history. First colonized by the city state of Corinth, Corfu has been ruled by the Romans, the Venetians, the French and the English. Corfu Town boasts fortresses bearing the insignia of the Venetian Republic, an esplanade lavishly planted by the French during the Napoleonic Wars, and an English cricket pitch. Corfu's old town is a mixture of the medieval and the modern. The island also offers some of the finest coastal scenery in the entire Mediterranean.
Accommodation: Onboard

09.10.25 **Cruising – Sicily (Messina), Italy**
(B/L/D) Arrive Messina at 7am, departing at 4pm. Messina has played a major role in European history since its founding as a Greek colony in the 8th century B.C. During the Roman Empire, the city was a major port and commercial centre. During the Middle Ages, Messina was the major port of departure for Crusaders. History has also left its scars with a massive earthquake leveling much of the city in 1908, as well as the devastation from World War II. Messina emerged with some of its historic treasures intact, including the 12th-century Annunziata dei Catalani Church.
Accommodation: Onboard

10.10.25 **Cruising – At Sea**
(B/L/D) Accommodation: Onboard

11.10.25 **Arrive Barcelona, Spain - Dubai**
(B) The ship arrives into Barcelona at 6am. After disembarking the ship, we are met and taken on a full day guided sightseeing tour of Barcelona.
We visit the main sites of the city, including the Gothic Quarter, which is a charming historical neighbourhood full of narrow, winding, medieval streets. We visit the La Boqueria Food Market and also Parc Guell, which contains quirky and colourful mosaics and amazing stone structures, a well known style of the legendary Catalan

architect Antoni Gaudi, who designed many of the features in this park. Officially opened in 1926 and initially planned as a district for the rich, it is now one of the city's most popular attractions and a great representation of Catalan modernism.

We also have an included visit to the Sagrada Familia, which is a famous Roman Catholic Basilica heavily influenced by the Chief Architect Antonio Gaudi. The basilica is considered to be Gaudi's masterpiece. Construction began in 1882 and after 140 years it is still unfinished. It is one of Barcelona's most famous landmarks. Please note that tickets to this event are subject to availability. Every effort will be made to secure these tickets in advance, but with visitor restrictions and capped ticket sales, it cannot be guaranteed. Following the tour we are transferred to Barcelona airport for our flights home.

All passengers depart Barcelona at 9.00pm on EK 188, arriving in Dubai at 5.30am the next morning.

12.10.25 Dubai – Australia

Melbourne passengers depart Dubai at 10.05am on EK 406, arriving in Melbourne at 6.30am the next morning (13.10.25).

Sydney passengers depart Dubai at 10.15am on on EK 412, arriving in Sydney at 7.05am the next morning (13.10.25).

Brisbane passengers depart Dubai at 10.35am on EK 434, arriving in Brisbane at 6.25am the next morning.

13.10.25 Arrive Australia

Your flights arrive into Sydney, Melbourne and Brisbane this morning.

1	2	3	4	5
---	---	---	---	---

Tour Difficulty Level 3

This tour rating typically involves a good level of physical activity, such as ascending stairs, getting into a bathtub shower, being responsible for your own luggage at airports, seaports and hotels, walking distances of over 500 metres at a time over possible uneven ground and/or cobblestone streets. Walking tours of considerable distances should be expected on tours with this rating as well as some early departures.



Sun Princess is the most impressive, luxurious and stunning Love Boat ever created and introduces an innovative ship platform designed exclusively for the world's most iconic cruise brand. With spacious yet intimate venues with more room to explore, Sun Princess debuts new eye-catching architectural elements including The Dome, a groundbreaking geodesic, glass-enclosed structure at the top of the ship inspired by the terraces of Santorini. The outward and suspended Sphere, the namesake of this new class of ship, takes the central Piazza hub of the ship into a new dimension. Guests are enveloped with expansive ocean views and an open concept, inspired to deliver the desired lifestyle of relaxed indoor and outdoor living.

Class: Sphere-Class **Guest Capacity:** 4,300 **Crew:** 1,600 **Tonnage:** 177,882
Length: 1,133 feet **Height:** 200 feet **Breadth:** 139 feet
Maximum Speed: 22 knots **Number of Decks:** 21 **Guest Staterooms:** 2,157 total

Showstopping Entertainment in Technically Advance Spaces

Mesmerizing shows and engaging activities are found all over the ship, highlighted by transformational entertainment venues. The Princess Arena, the most technologically advanced Princess Theatre design, has three configurations to maximize sight lines and deliver a truly captivating experience. With a pool by sunlight and a stage for shows by starlight, the glass-enclosed Dome, inspired by the hills of Santorini, features acrobatic performances created in partnership with Cirque Éloize.

Extraordinary Experience

Following the successful debut of the first extraordinary experience with 360 onboard Discovery Princess and Enchanted Princess, the next in the series is *Spellbound by Magic Castle*, in partnership with the famed Hollywood icon. The newest extraordinary experience blends the captivating world of magic with the art of mixology. The unique venue features incredible feats of magic from talented magicians, surprises in themed rooms and theatrical cocktails.

The Greatest Foodie Destination at Sea

Sun Princess serves up 30 inviting restaurant and bar venues with an unprecedented collection of celebrity collaborators, high-end ingredients and culinary experiences. Highlights include Love by Britto, an artistic-inspired dining experience celebrating love, in partnership with Romero Britto; The Butcher's Block by Dario, in partnership with the world's most famous butcher, Dario Cecchini; Makoto Ocean, in partnership with Master of Edomae-style sushi Makoto Okuwa; and Umami Teppanyaki, where world-class cuisine intertwines with captivating performance.

Main & Casual Dining (included in cruise fare):

- The Eatery
- Horizons Dining Room
 - Soleil Dining Room, Deck 6 - traditional dining
 - Eclipse Dining Room, Deck 7 - anytime dining
 - All American Dining Room - Deck 8
 - International Café
- The Lido

Lido Greens	Lido Grill	Lido Slice
Lido Tacos	Lido Coffee & Cones	
- Promenade Dining

Promenade Grill	Promenade Ice Cream	Promenade Slice
-----------------	---------------------	-----------------

Specialty Dining* - includes a fee – some are complimentary with Princess Plus or Premier Package:

Alfredo's Pizzeria	Crown Grill	Love by Britto
Makoto Ocean	O'Malley's Irish Pub	Sabatini's
The Butcher's Table by Dario	The Catch by Rudi	Umami Hot Pot

Umai Teppanyaki

Signature & Reserve Collection:

Reserve Collection Restaurant

Signature Lounge

Signature Restaurant

Bar Offerings:

Bellini's Cocktail Bar

Cascade Bar

Coffee & Cones

Coffee Currents

Crooners

Good Spirits at Sea

Lido Bar

Sea View Bar

Sun Bar

The MIX

Promenade Bars

Wheelhouse Bar

Room Service:

24-hour Room Service (*carries a one-time delivery fee or complimentary with Princess Plus*)

Relaxation and Wellness

In these all-new spaces, guests can recharge by simply taking in the ocean vistas around them. The Sea View Terrace sets the tone at the front of the ship, while the new Wake View Terrace features an infinity pool and unparalleled views. The two-story Lotus Spa and Lotus Salon offer relaxing treatments and services for guests to enjoy any time during their voyage.

Outdoor Spaces for Relaxation:

Sea View Terrace

Signature Sun Deck

The Sanctuary*

Wake View Terrace

Pools & Hot Tubs:

5 Pools – 2 Lido-Deck Pools, Dome, Sanctuary Pool and WakeView Pool and 9 Hot Tubs

Wellness:

Fitness Centre

Fitness Studio

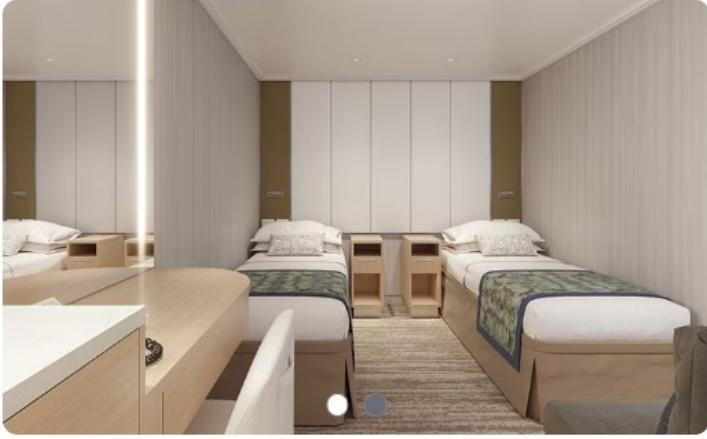
Lotus Salon

Lotus Spa

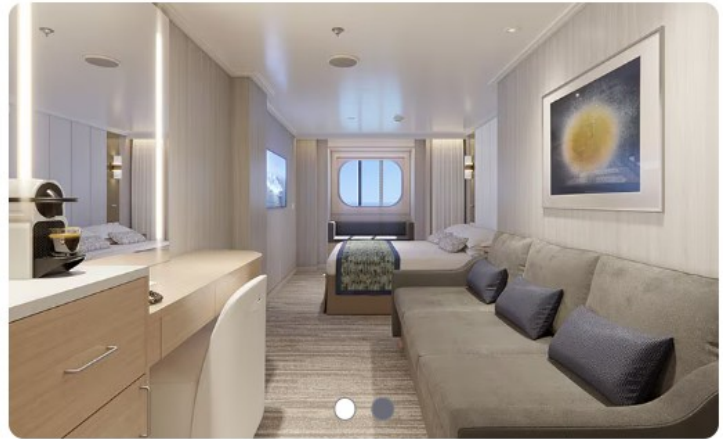
Wellness Studio

Retail

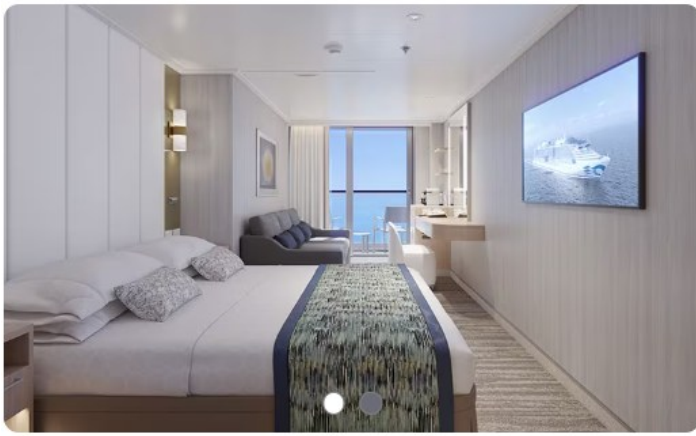
Experience an extraordinary retail journey in a transformed space that will include over 25 brands available to cruise guests for the first time at sea. Within the more than 5,800 square feet of retail space, spread over two decks, will be a line-up of more than 200 premium brands from fine jewellery and watches to fashion, fused with an evolving blend of lifestyle and experiential activations.



Inside Cabin – Approx Size 145 sq ft.



OceanView Cabin - Approx 146 - 212 sq ft



Balcony Cabin – Approx Size 179-279 sq ft
Balcony with Floor to Ceiling sliding glass doors

Standard Cabin amenities include a hair dryer, refrigerator, TV, closet and bathroom/shower, Flat-panel television, 100% cotton, high-thread count linens, Spacious closet, Desk with chair
Hair dryer & bathroom amenities, Digital security safe

Pictures above are an example only



Conditions for Macleay Valley Travel's Greece Tour with Mediterranean Cruise

Deposits and Payments - A non-refundable deposit of \$800 per person is payable within 7 days of booking. This deposit is not refundable should you later cancel. The balance is payable in full 17 weeks prior to departure. Macleay Valley Travel has to adhere to strict payment deadlines and your booking on the tour may be cancelled if final payment is not received by the due date, with no refund applicable. Please note higher non-refundable deposits may apply for airline and/or cruise cabin upgrades.

Refunds and Cancellations - Cancellations after final payment will result in a refund limited to whatever we can recoup from the airline. Any refund for a cancelled booking will not be paid until the airline(s) have provided said refund.

Insurance - Adequate travel insurance that includes medical coverage for Covid-19 is required. Please contact your preferred travel insurance provider. The responsibility to obtain adequate travel insurance rests with the passenger. Proof of your travel insurance is required to be presented to us on or before the final payment date of the tour.

Airline Tickets - Please note that any changes made to airline tickets once they have been issued will likely incur high cancellation and/or reissue fees. These fees are typically set by the airline and are outside of our control.

Passports - All travellers require a current passport with at least 6 months left on it at the end of the tour. Non-Australian passport holders require a re-entry visa for Australia. An ETIAS (known as a European Visa Waiver) is required. The expected cost for this is 7 Euros per person. No other visas are required if travelling on an Australian passport.

Basic Tour Price and Taxes - Air taxes and fuel levies are included in the basic tour price if the tour is paid in full on or before the due date on the final invoice.

Not Included in the Cost - All items of a personal nature such as telephone calls, drinks, excess baggage, tips, meals, (except those specified in the itinerary), etc. Also travel insurance and departure taxes. Similarly, credit card payments (Visa/MasterCard) can only be accepted if 1.2% is added to the price to help defray the heavy merchant fees charged to us by the credit card companies. There is a 2% surcharge for payments made using American Express.

Princess Gratuities - Princess will automatically apply a daily crew appreciation amount of USD \$17 per guest, per day of the cruise. If the service exceeds or fails to meet your expectations, you can adjust the amount of gratuities on the cruise.

Breakaway - All fully inclusive prices are based on group travel and any deviation from the set itinerary can be permitted under certain circumstances. Please contact our office to discuss your specific request and pricing.

Accreditation - Macleay Valley Travel is a fully accredited travel agency under the AFTA (Australian Federation of Travel Agents) ATAS - AFTA Travel Accreditation Scheme. As such, you are assured of a consumer focused and quality assured business, ensuring professional conduct and ethical business practices.

Limitation of Liability concerning Covid-19 - It is possible that there may be outbreak(s) of Covid-19 during this tour. Whilst we take necessary safety precautions, Macleay Valley Travel cannot be held responsible for any quarantines or other associated costs brought about by quarantines, border closures and/or travel delays. You are aware that Covid-19 is a highly contagious and potentially dangerous disease that may result in significant illness and even death. You acknowledge that you are voluntarily participating in the tour with knowledge of the inherent risks of Covid-19, and you agree to assume all risks.

Health and Fitness - Macleay Valley Travel recommends that the passenger is reasonably healthy and/or fit to participate in this tour. Persons with a disability requiring special assistance must be accompanied by a companion. Macleay Valley Travel and their representatives cannot provide this service. The Health & Fitness Questionnaire located on the last page of this itinerary needs to be completed in full by each passenger and accompany your booking form. Macleay Valley Travel reserves the right to accept/decline or terminate a passenger's participation in the tour under certain circumstances. It is strongly recommended that you are fully vaccinated against Covid-19, but this is not mandatory. Passengers must comply with any specific Covid-19 requirements that may be imposed by airlines and/or authorities of the destinations visited.

Twin Share Bookings - If you do not have a travel partner, but wish to travel at twin share rates, we will try and assign you with another traveller but this is not guaranteed. We assign passengers by their gender, on a first come, first served basis and do not assign twin share passengers according to their age, profession, interests etc. There are risks with sharing a room with a person you do not know, and Macleay Valley Travel accepts no responsibility if you are incompatible with your assigned room mate. Additionally, if you are assigned a travelling companion to share with and they cancel off the tour prior to making the final payment, then you will either be required to pay the single room supplement or we will try our best to assign you with another twin share passenger, if one is available.

Disclosure of fees or commissions received from third parties - Macleay Valley Travel Pty Ltd may receive fees, commissions, gifts or financial incentives from third parties under this contract.

Limitation of Liability - As Macleay Valley Travel acts only as agent for the Airlines, Hotels, Coach Companies etc., providing accommodation, transportation and other services, Macleay Valley Travel shall not be liable or responsible for death or injury to any person or loss or damage to any property including baggage arising out of or connection with any transportation, accommodation or other services, or resulting directly or indirectly from acts of God, fire, breakdown in machinery or equipment, acts of Government or other authorities, de jure or defacto wars, whether declared or not, hostilities, civil disturbances, strikes, riots, thefts, epidemics, pandemics, endemics, quarantines, medical or customs regulations, delays or cancellations caused by changes in schedules or itinerary, or over bookings or defaults or for any causes beyond Macleay Valley Travel's control or any loss or damage resulting from improper or insufficient passports, visas or other documents and neither Macleay Valley Travel, and its servants or employees shall be or become liable or responsible for any additional expenses or liability sustained or incurred by the tour member as a result of the foregoing causes. Additionally, you must meet the entry requirements for each country you visit. Macleay Valley Travel will not be liable if you are denied entry to a country for any reason, including a past criminal history. Macleay Valley Travel reserves the right to decline bookings made for any group tour. Any tour booking confirmation is conditional, contingent on our view of the ability of a person to be able to participate in a tour without the likelihood of conflict between members of a tour whether perceived or actual. Macleay Valley Travel reserves the right to modify the itinerary or the accommodation if circumstances make this necessary, provided that the amended itinerary is of equal value or greater value than that of the original program.

MACLEAY VALLEY TRAVEL - BOOKING FORM

PLEASE PRINT DETAILS CLEARLY IN BLOCK LETTERS AND ALSO

A PHOTOCOPY OF YOUR PASSPORT MUST BE SENT WITH BOOKING FORM

Name of Tour : _____ Departure Date: _____

Passenger 1 (as written in passport) _____

Title: **Mr. Mrs. Ms. Miss. Dr.** _____ Age: _____ Date of Birth: _____

Passenger 2 (as written in passport) _____

Title: **Mr. Mrs. Ms. Miss. Dr.** _____ Age: _____ Date of Birth: _____

Postal Address: _____

_____ **PostCode** _____ **Email** _____

Telephone / Fax Number: _____ **Mobile** _____

Passport Number: _____ Expiry Date: _____

Passport Number: _____ Expiry Date: _____

Passport Nationality: _____ Preferred Name: _____

Passport Nationality: _____ Preferred Name: _____

(Passport must have 6 months validity from the time of tour completion)

Double Bed / Twin beds / Single Room: (Room type is subject to availability)

Type of cabin: **INSIDE CABIN / OCEAN VIEW CABIN / BALCONY CABIN**

Circle which airport you wish to depart from: SYDNEY / MELBOURNE / BRISBANE

Special Dietary Requests – Passenger 1: _____ Passenger 2: _____

Optional Extensions: _____

Any existing medical conditions – Passenger 1: _____ Passenger 2: _____

In case of emergency, please notify :

Name: _____ Relationship: _____

Address: _____

Phone Number: _____

Please return this sheet with your non-refundable deposit of \$800 per person & the health & fitness form.

DECLARATION. I have read and understand fully the booking conditions and I accept them.

Signature: _____ Date: _____

A passport copy is required to verify the spelling of your name. If not provided and the information we have for the airline is incorrect and the ticket is issued, then the airline will charge a reissue fee.

HEALTH & FITNESS QUESTIONNAIRE

Macleay Valley Travel strives to make our tours enjoyable experiences for all passengers, however some countries and tour services lack the standards that you can typically expect in Australia.

To help ensure your personal safety and enjoyment on tour, please answer the following questions. The information you provide will be treated confidentially and will be used to check that the transportation, accommodation and facilities on tour are suitable for you:

1. Do you have any allergies? Yes / No
If yes, please provide details and severity: _____
2. Can you walk 500 metres to 1km in distance comfortably and unaided? Yes / No
3. Can you negotiate uneven, undulating and sometimes challenging terrain? Yes / No
If no, please provide details about these limitations: _____
4. Do you use a mobility aid? Yes / No
If yes, please provide details: _____
5. Are you travelling with a companion or carer who is able to provide all the assistance you need to enter buildings, disembark and embark ships, aircraft, coaches, small boats and assist you on excursions? Yes / No
If yes, please provide the name of your carer/companion and your relationship to them: _____
6. Are you taking any medical equipment to assist you? Yes / No
If yes, please provide details: _____
7. Do you suffer from any condition which may cause you to experience memory loss or become disoriented? Yes / No
If yes, please provide details: _____
8. Are you asthmatic or do you have other breathing difficulties? Yes / No
If yes, please provide details (travelling to high altitudes is not recommended): _____
9. Do you require supplementary oxygen? Yes / No
10. Are you currently taking medication? Yes / No
If yes, are you able to administer your own medication? Yes / No
11. If you have any other medical information that is not covered in the previous questions, please provide a description here: _____

The information you supply us will be passed onto relevant travel suppliers who will do their best accommodate you. However, it is very important to remember that meeting your needs cannot be guaranteed, especially when travelling to third world countries.

DISCLAIMER

I confirm that the information provided on this questionnaire is both true and correct and I understand that there is no guarantee that all these needs will or can be met. I agree that Macleay Valley Travel may offer a recommendation with regard to fitness to travel, based on the information I have provided. I also understand that this information may be passed onto those responsible for supplying the land arrangements for my travel, and that my information will not be communicated to any party which is not directly responsible or otherwise associated with my travel arrangements. I further confirm and agree that should I choose not to disclose information which subsequently requires me to return or be returned home from a tour or cruise, Macleay Valley Travel is not responsible for any costs associated with cancellation penalties, airfares, land transportation or any other related hardship. Please note that a refund for lost touring cannot be claimed. I acknowledge that it is my responsibility to update the information I provided to Macleay Valley Travel immediately should my circumstances change.

Name: _____
Signature: _____
Date: _____

HEALTH & FITNESS QUESTIONNAIRE

Macleay Valley Travel strives to make our tours enjoyable experiences for all passengers, however some countries and tour services lack the standards that you can typically expect in Australia.

To help ensure your personal safety and enjoyment on tour, please answer the following questions. The information you provide will be treated confidentially and will be used to check that the transportation, accommodation and facilities on tour are suitable for you:

1. Do you have any allergies? Yes / No
If yes, please provide details and severity: _____
2. Can you walk 500 metres to 1km in distance comfortably and unaided? Yes / No
3. Can you negotiate uneven, undulating and sometimes challenging terrain? Yes / No
If no, please provide details about these limitations: _____
4. Do you use a mobility aid? Yes / No
If yes, please provide details: _____
5. Are you travelling with a companion or carer who is able to provide all the assistance you need to enter buildings, disembark and embark ships, aircraft, coaches, small boats and assist you on excursions? Yes / No
If yes, please provide the name of your carer/companion and your relationship to them: _____
6. Are you taking any medical equipment to assist you? Yes / No
If yes, please provide details: _____
7. Do you suffer from any condition which may cause you to experience memory loss or become disoriented? Yes / No
If yes, please provide details: _____
8. Are you asthmatic or do you have other breathing difficulties? Yes / No
If yes, please provide details (travelling to high altitudes is not recommended): _____
9. Do you require supplementary oxygen? Yes / No
10. Are you currently taking medication? Yes / No
If yes, are you able to administer your own medication? Yes / No
11. If you have any other medical information that is not covered in the previous questions, please provide a description here: _____

The information you supply us will be passed onto relevant travel suppliers who will do their best accommodate you. However, it is very important to remember that meeting your needs cannot be guaranteed, especially when travelling to third world countries.

DISCLAIMER

I confirm that the information provided on this questionnaire is both true and correct and I understand that there is no guarantee that all these needs will or can be met. I agree that Macleay Valley Travel may offer a recommendation with regard to fitness to travel, based on the information I have provided. I also understand that this information may be passed onto those responsible for supplying the land arrangements for my travel, and that my information will not be communicated to any party which is not directly responsible or otherwise associated with my travel arrangements. I further confirm and agree that should I choose not to disclose information which subsequently requires me to return or be returned home from a tour or cruise, Macleay Valley Travel is not responsible for any costs associated with cancellation penalties, airfares, land transportation or any other related hardship. Please note that a refund for lost touring cannot be claimed. I acknowledge that it is my responsibility to update the information I provided to Macleay Valley Travel immediately should my circumstances change.

Name: _____
Signature: _____
Date: _____