

# MACLEAY VALLEY TRAVEL PTY. LTD.

33 Smith Street, Kempsey  
NSW 2440  
Australia

Email: [info@macleayvalleytravel.com](mailto:info@macleayvalleytravel.com)  
Website: [www.macleayvalleytravel.com](http://www.macleayvalleytravel.com)

Telephone (02) 6562-6699  
Toll Free 1800 81-0809  
Fax (02) 6562-6276



## EUROPEAN WATERWAYS TOUR BARCELONA TO AMSTERDAM

15 Day Conducted Tour  
for **\$7,995** per person twin share  
This price includes airport taxes & levies

This is amazing value as the price covers all of the following:

- Economy Class air fares Sydney, Melbourne and Brisbane into Barcelona, Spain and out of Amsterdam with Singapore Airlines.
- A 4 day Rhone River cruise in France, commencing in Arles in the south and disembarking in Lyon. We travel aboard the MS Van Gogh, a premium two deck cruise ship completely renovated in 2018.
- A 6 day Rhine River cruise from Basel, Switzerland to Amsterdam, travelling aboard the MS Symphonie, a premium two deck cruise ship completely renovated in 2017. The cruise travels through Switzerland, France, Germany and The Netherlands.
- A 3 day stopover in Barcelona with tours.
- Good accommodation, mainly 3 to 4 star with private facilities.
- Most meals, as stated in the itinerary.
- Transport, transfers and entrance fees to many attractions.
- Services of local tour guides and an Australian tour escort.

The cruise of these wonderful rivers includes a full program of included tours throughout our time in Europe.

Your onboard accommodation is based on Main Deck cabins. If you wish you can upgrade to an Upper Deck cabin for an extra charge of \$585 per person twin share, subject to availability.



If you don't have anyone to share with but wish to travel at twin share rates, we will try and assign you with another person but this is not guaranteed. For a single room there is an extra cost of \$2,155.



**Tour departs Australia 15<sup>th</sup> June and returns 29<sup>th</sup> June 2024**

*We try harder to find you the best travel deal*

## **Itinerary for European Waterways Cruise**

Included meals are indicated as B = Breakfast, L = Lunch, D = Dinner

### **15.06.24 Australia – Singapore – Barcelona**

Depart Brisbane at 2.45pm on Singapore Airlines flight SQ 236, arriving in Singapore at 8.45pm.

Depart Sydney at 3.00pm on flight SQ 222, arriving in Singapore at 9.20pm.

Depart Melbourne at 3.40pm on SQ 228, arriving in Singapore at 9.30pm.

All passengers depart Singapore at 11.30pm on flight SQ 378, arriving in Barcelona, Spain at 9.15am the next morning (this flight goes via Milan, Italy).

### **16.06.24 Barcelona, Spain**

Upon arrival in Barcelona, we are met and taken on a morning city tour.

We visit Barcelona's highest mountain, Montjuic, and have an included 750 metre cable car ride above the tree tops to the top of the mountain to enjoy panoramic views of the city and surrounds. We have some free time by the nearby port for a coffee, if you wish. We drive past Barcelona's beaches and see the urban art/graffiti.

Following the tour we transfer to our hotel for a two night stay.

The remainder of the day is at leisure to relax or explore Barcelona on your own.

Accommodation: Hotel Balmes or similar

### **17.06.24 Barcelona**

**(B/D)**

After an included breakfast we commence a full day tour of Barcelona.

We visit the Gothic Quarter, which is a charming historical neighbourhood full of narrow, winding, medieval streets. We have an included visit to the Picasso Museum which houses an extensive collection of artworks by the Spanish artist Pablo Picasso. We have an included visit to the Sagrada Familia, which is a famous Roman Catholic Basilica heavily influenced by the Chief Architect Antonio Gaudi. The basilica is considered to be Gaudi's masterpiece. Construction began in 1882 and after 140 years it is still unfinished. It is one of Barcelona's most famous landmarks. Following this we visit Gaudi's Park to see more of his handiwork. The park was never fully completed, but shows Gaudi's colourful and playful works. It is considered to be one of the most impressive public parks in the world.

This evening we enjoy a traditional Spanish dinner at a local restaurant with included drinks.

Accommodation: Hotel Balmes or similar

### **18.06.24 Barcelona – Arles, France**

**(B/D)**

We have a relaxing start this morning, and check out of the hotel. Following this we commence about a 5 hour drive from Spain to Arles in the south of France. We will have short stops along the way in the French cities of Perpignan and Montpellier. We arrive at the Port of Arles around 6pm and board our ship, the MS Van Gogh for our cruise along the Rhone River in France.

Our Premium ship was completely renovated in 2018 and has been redesigned and refitted to offer larger, bright and comfortable spaces. The two deck ship has a restaurant, lounge, bar and a sun deck to relax whilst cruising. The ship is 110 metres long, with 54 cabins and 25 crew.

After settling into our cabins we will be introduced to the crew at a welcome cocktail

before dinner.

This evening we will enjoy a walking tour of Arles. We will see the Roman Amphitheatre, the Ancient Roman Theatre and Place St Trophime with its cloister and church, which are part of the Arles Route, one of the three pilgrimage routes leading to Santiago de Compostela. We continue on to see the Place du Forum and finally, the Thermae of Constantine. This is followed by some free time before returning to the boat on foot.

Accommodation: Onboard MS Van Gogh

**19.06.24 Arles – Port Saint Louis – Martigues - Arles**

**(B/L/D)**

This morning we enjoy a panoramic guided tour of the Camargue. Sit back and admire the rivers, marshes, ponds, pink flamingoes, black bulls and the famous, indigenous Camargue horses. Discover the salt and rice fields that make the area so well known. We'll visit a manade (bull breeding farm) and learn about the work of a manadier as we watch a demonstration of how they work with the animals they raise. Our visit will include a cocktail on the patio. At the end of our visit, we'll return to the ship in Arles. In the afternoon we cruise south to Martigues, where there is some free time to explore the city on your own, before cruising back to Arles.

Accommodation: Onboard MS Van Gogh

**20.06.24 Arles – Viviers**

**(B/L/D)**

This morning we set off on a guided tour of Les Baux de Provence, one of the most beautiful villages in France. Located in the heart of the Alpilles on a rocky plateau, the village overlooks breath-taking landscapes over Arles, the Camargue and the Alpilles. Tourism developed in this region after World War II with the arrival of Raymond Thuillier who contributed to the worldwide popularity of the Baux with the opening of the gastronomic restaurant 'Oustau de Baumanière' where celebrities and political figures would often dine. In 1966, André Malraux issued a decree putting the village under protection of the Ministry of Culture and the Environment. A prosperous era then started for the Baux which had been left aside since the Revolution. The restoration of the city led to its being listed as one of the 'Most Beautiful Villages' in France in 1998. We return to the ship by coach.

This afternoon we cruise to Viviers.

Accommodation: Onboard MS Van Gogh

**21.06.24 Viviers – La Voulte – The Vercors Plateau – Tain-L'Hermitage - Lyon**

**(B/L/D)**

This morning we have a leisurely cruise to La Voulte.

In the afternoon we depart by coach from La Voulte towards Die. Carved out in limestone, the Vercors Regional Nature Park extends over 186,000 hectares between the Isère Valley to the North and the Diois to the South. Water has shaped deep gorges in the cliffs, majestic valleys, caves and chasms that are among the most famous in Europe. Wooded plateaus and valleys shaped by agriculture are home to remarkable flora and fauna.

We'll stop at the cellars of Die Jaillance to enjoy a wine tasting session. Afterwards, we will continue by coach for a panoramic view of the Rousset Pass located in the heart of the Vercors and reaching an altitude of over 1400 metres. The belvedere culminates at a height of 1245 metres and from this point of view the scenery is outstanding. We'll continue towards Vassieux-en-Vercors, La Chapelle-en-Vercors and Pont-en-Royans where we'll get to see the suspended houses, whose daring architecture dates as far back as the perched village itself, built in the 15th century.

Lastly, we'll drive through Romans-sur-Isère, which is well known for its shoe industry before returning to Tain l'Hermitage to board our ship and cruise to Lyon.  
Accommodation: Onboard MS Van Gogh

**22.06.24 Lyon – Basel, Switzerland**

**(B/D)**

Enjoy one last buffet breakfast on board before disembarking in Lyon and travelling by coach to Basel in Switzerland. Travel time is approximately 5 hours.

Upon arrival we board the MS Symphonie for our Rhine River cruise.

Our Premium ship was completely renovated in 2017. The two deck ship has a restaurant, lounge, bar and a sun deck to relax whilst cruising. The ship is 110 metres long, with 55 cabins and 25 crew.

After comfortably settling into our cabins we will be introduced to the crew at a welcome cocktail. This evening we enjoy dinner on board the ship.

Accommodation: Onboard MS Symphonie

**23.06.24 Basel – Colmar, France - Breisach, Germany**

**(B/L/D)**

We cruise north on the Rhine River towards Germany.

This afternoon we will have a guided tour of Colmar. Colmar will charm us with its authenticity and Alsatian architecture composed of brightly painted half-timbered facades dating from the Middle Ages. We'll discover the quintessential neighbourhood of 'Little Venice' and visit the Unterlinden Museum, featuring a large collection of local and international artworks and manufactured artifacts from prehistorical to contemporary times. The museum is housed in a 13th-century Dominican convent and a 1906 former public baths building, which was renovated by Swiss architects Herzog & de Meuron in 2015. Inarguably the most important work in this collection is the Isenheim Altarpiece.

Accommodation: Onboard MS Symphonie

**24.06.24 Breisach – Strasbourg, France – Mainz, Germany**

**(B/L/D)**

This morning we cruise through the nearby vineyards dotting the hills along the Vosges Mountain Range, the Black Forest, and the Alsatian Plains. This afternoon we have a boat tour of the French border city of Strasbourg and a visit to its cathedral.

Like many European cities, Strasbourg has a striking mix of architecture that includes a broad range of traditional structures next to bold modern designs.

This evening our ship will cruise to the German city of Mainz.

Accommodation: Onboard MS Symphonie

**25.06.24 Mainz - Koblenz**

**(B/L/D)**

This morning we have a walking tour of Mainz.

Capital of the Rhine Palatinate, Mainz was founded more than 2000 years ago by the Romans. In the 17<sup>th</sup> and 18<sup>th</sup> centuries, the top architects and sculptors created the basic shape of the town, with fine palaces and churches. Here we can admire the magnificent historic houses which have been outstandingly well-restored. Located on the banks of the Rhine, Mainz will captivate us with its incomparable lifestyle, its unique charm and its openness to the world. In the company of our guide, we will visit the magnificent cathedral, whose construction began in 975 and which has left a deep mark on the history of the town. The interior of the cathedral houses some wonderful historic treasures, including tombs and funerary monuments from the 13<sup>th</sup> to the 18<sup>th</sup> centuries. We will also have the opportunity to wander up and down the colourful

streets in the old town. Finally we will visit the Gutenberg Museum, the world's finest museum for printing equipment, materials and books. Born in Mainz around 1400, Johannes Gutenberg himself prepared the copy of the Bible referred to as "the 42-line Bible" which was published in 1455 and is the oldest printed book in the world. Out of the 46 copies still in existence, the museum has just one, along with a 'Mainz Psalter', the first ever document printed using three different colours of ink. The museum extends over five floors and provides a remarkable exhibition on the history of the book and written word in Europe and the rest of the world. We return on board by foot. Later we will cruise through the romantic Rhine Valley and enjoy the amazing scenery as we travel to the legendary rock of the Lorelei. We will have dinner on board and then visit the city with our host or hostess.

Accommodation: Onboard MS Symphonie

#### **26.06.24 Koblenz – Cologne - Dusseldorf**

**(B/L/D)**

We commence cruising to Cologne, passing the cities of Andernach, Königswinter and Bonn. As our ship approaches Cologne, catch a glimpse of the Seven Hills, known for the myths and fairy tales about its origins. We'll arrive late morning.

In the afternoon we depart on foot for downtown Cologne to discover the city in the company of our guide. Crossroads of Europe since the Middle Ages, Cologne (Köln) has kept its importance as a vibrant commercial and industrial city as well as a cultural and religious centre. Admire the exterior façades of the huge Gothic Köln Cathedral which took five centuries to complete. Although construction started in 1247, it was interrupted due to a lack of financing in 1560 and only started again in 1842 upon request of Emperor Frederick Wilhelm IV, who had fallen in love with the building. Construction was finally completed in 1863 and the Gothic Cathedral was the highest building in the world from 1880 to 1884. Around the Cathedral, 12 other Romanesque style churches are set in a circle, representing the 12 Apostles.

Following this we move on to the old town and stop to admire the outside of the neo-Gothic building, home of the famous 'Eau de Cologne'.

Before returning on board, we will have some free time to stroll through the streets of Cologne or perhaps try the famous local beer, the Kölsch. Later we are transferred by coach to Dusseldorf. This evening we have a festive gala evening onboard the ship.

Accommodation: Onboard MS Symphonie

#### **27.06.24 Dusseldorf – Xanten – Nijmegen, The Netherlands**

**(B/L/D)**

The morning is at leisure to relax. In the afternoon we depart by coach for the Dutch Open Air Museum in Arnhem, which is located in a beautiful wooded park. Some 80 authentic farms, windmills, workshops, houses, barns, a church and a school provide an insight into the everyday life and architecture of yesteryear.

Be intrigued by the typical furniture and the displays of various trades and crafts. Some of the buildings are grouped together, such as the beautiful Limburg timber-framed buildings or the Gelderland farms, but the most charming spot is without a doubt the area dedicated to the Zaan region, with its green painted wooden houses and tastefully decorated gables. Our visit will start with the renovated entrance pavilion and its good vantage point over the park and its many windmills. There are farming implements on display in many areas.

Our ship will cruise to Nijmegen, where we rejoin the ship and commence cruising to Amsterdam.

Accommodation: Onboard MS Symphonie

**28.06.24 Amsterdam – Singapore**

**(B)**

If time permits, we have an early morning breakfast before being transferred to Amsterdam Airport for our flights home.

Depart Amsterdam at 11.15am on flight SQ 323, arriving in Singapore at 5.55am the next morning (29.06.24).

**29.06.24 Singapore – Australia**

Sydney passengers depart Singapore at 7.15am on SQ 241, arriving in Sydney at 4.55pm.

Melbourne passengers depart Singapore at 7.45am on SQ 207, arriving in Melbourne at 5.10pm.

Brisbane passengers depart Singapore at 9.55am on SQ 245, arriving in Brisbane at 7.30pm.

**Note:** The itinerary on board the cruise ship is to be used as a guide only, and is subject to change pending operational and weather conditions.





## **INFORMATION ABOUT THE CRUISE**

Breakfast is a self-serve buffet in the onboard restaurant, which may include pastries, coffee, tea, juice, breads, jams, a variety of sausages and cold cuts, eggs, fresh fruit and yoghurt.

Lunch and dinner will be 3 course sit down meals prepared by the onboard chefs and served at set times and in a single seating for all passengers. The tables usually seat six persons. The meals often include local specialities, made from fresh ingredients. Both lunch and dinner meals are paired with excellent complimentary wines.

Free beverages are provided with every meal, including mineral water, fruit juice, tea, coffee, house wine and beer. Champagne, premium wines and spirits are available at an additional charge.

The cabins on the cruise have individual controls for air conditioning and heat, so you can adjust your room to meet your needs. Each cabin is equipped with a television, 220V electricity and a safe. For your personal comfort all cabins are equipped with a shower, toilet and basin, and are provided with towels, but not washcloths.

Entertainment on board consists of various pre-dinner games, dinner-dances and other lively evenings in the lounge.

The primary language onboard the ship is French, however the majority of the staff and tour guides are fluent in English. Notices and announcements are in French and English.

The primary currency onboard is the Euro. Visa, MasterCard and American Express are also accepted. There are no currency exchange facilities onboard.

Electricity onboard is 220V. You will need to bring a standard two-pin 'European' adaptor for your electrical items.

The dress code is typically smart casual attire. Bring a variety of clothing for the environments expected on the cruise, including a rain coat and/or small umbrella. We advise you to bring clothes which do not wrinkle too much because there are no ironing facilities on board. Regarding dinners, cocktails and galas, it is advisable to dress up a little more without the need, for gentlemen, necessarily to wear a jacket and tie.

Tipping – It is ship policy that any tips received will be shared equally among all crew members. An acceptable tipping guideline is 5 – 10 Euros per person, per day, with the understanding that tipping is entirely at your discretion. To leave a tip, please use the envelope found in your cabin on your last evening onboard.

Free Wi-Fi internet is available in the lounge area of the ship.

There is no doctor or nurse available on the ship

1	2	3	4	5
---	---	---	---	---

### Tour Difficulty Level 3

This tour rating typically involves a good level of physical activity, such as ascending stairs, getting into a bathtub shower, being responsible for your own luggage at airports and hotels, boarding trains quickly with your luggage, walking distances of up to 500 metres at a time over possible uneven ground and/or cobblestone streets. Walking tours of considerable distances should be expected on tours with this rating as well as some early departures.

Your accommodation on the ships is based on Main Deck cabins. If you wish you can upgrade to an Upper Deck cabin for an extra charge of \$585 per person twin share, subject to availability.

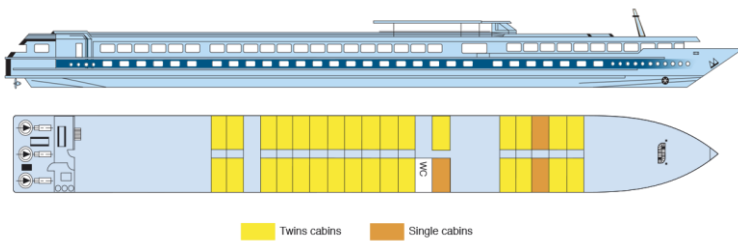
### Example of a Main Deck cabin



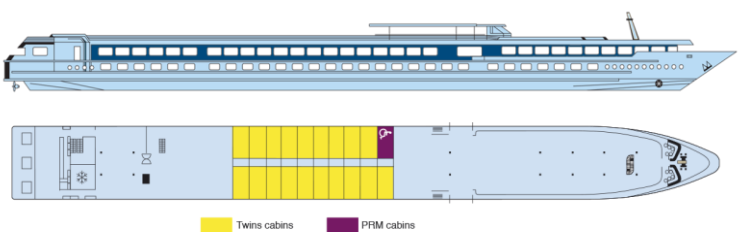
### Example of an Upper Deck cabin



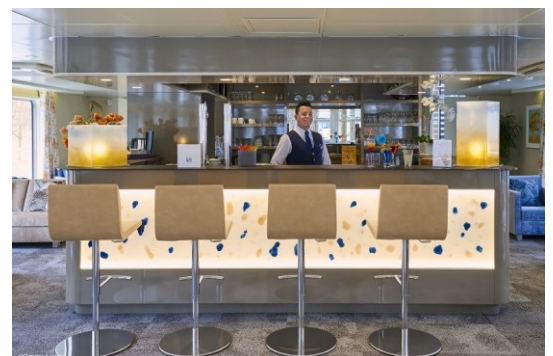
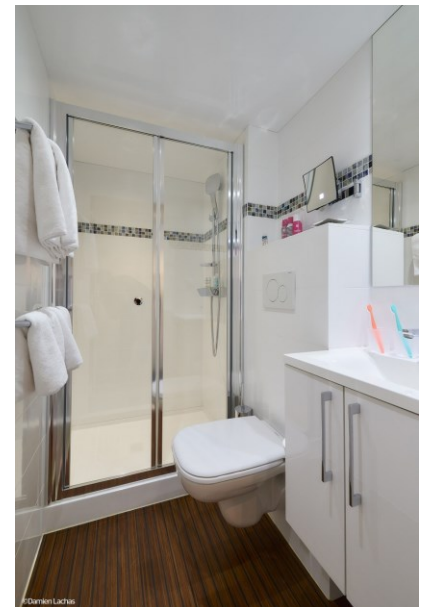
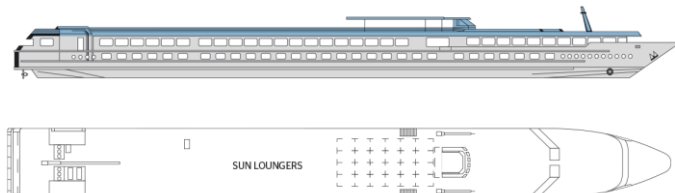
### MAIN DECK



### UPPER DECK



### SUN DECK





## Conditions for Macleay Valley Travel's European Waterways Tour

**Deposits and Payments** - A non-refundable deposit of \$400 per person is payable within 7 days of booking. This deposit is not refundable should you later cancel. The balance is payable in full 14 weeks prior to departure. Macleay Valley Travel has to adhere to strict payment deadlines and your booking on the tour may be cancelled if final payment is not received by the due date, with no refund applicable.

**Refunds and Cancellations** - Cancellations after final payment will result in a refund limited to whatever we can recoup from the airline. Any refund for a cancelled booking will not be paid until the airline(s) have provided said refund.

**Limitation of Liability concerning Covid-19** - It is possible that there may be outbreak(s) of Covid-19 during this tour. Whilst we take necessary safety precautions, Macleay Valley Travel cannot be held responsible for any quarantines or other associated costs brought about by quarantines, border closures and/or travel delays. You are aware that Covid-19 is a highly contagious and potentially dangerous disease that may result in significant illness and even death. You acknowledge that you are voluntarily participating in the tour with knowledge of the inherent risks of Covid-19, and you agree to assume all risks.

**Insurance** - Adequate travel insurance that includes medical coverage for Covid-19 is required. Please contact your preferred travel insurance provider. The responsibility to obtain adequate travel insurance rests with the passenger. Proof of your travel insurance is required to be presented to us on or before the final payment date of the tour.

**Airline Tickets** - Please note that any changes made to airline tickets once they have been issued will likely incur high cancellation and/or reissue fees. These fees are typically set by the airline and are outside of our control.

**Passports** - All travellers require a current passport with at least 6 months left on it at the end of the tour. Non-Australian passport holders require a re-entry visa for Australia. From early 2024. Australian citizens travelling to the EU will require an ETIAS (European Travel Information and Authorisation System) for stays of up to 90 days. This is otherwise known as a European visa waiver. The expected cost for this is 7 Euros per person, payable by credit card. This price is subject to change.

**Basic Tour Price and Taxes** - Air taxes and fuel levies are included in the basic tour price if the tour is paid in full on or before the due date on the final invoice. Macleay Valley Travel reserves the right to charge for any increase in air taxes and fuel levies if the tour is not paid in full by the due date.

**Not Included in the Cost** - All items of a personal nature such as telephone calls, drinks, excess baggage, tips, meals, (except those specified in the itinerary), etc. Also travel insurance and departure taxes. Similarly, credit card payments (Visa/MasterCard) can only be accepted if 1.2% is added to the price to help defray the heavy merchant fees charged to us by the credit card companies. There is a 2% surcharge for payments made using American Express.

**Breakaway** - All fully inclusive prices are based on group travel and any deviation from the set itinerary can be permitted under certain circumstances. Please contact our office to discuss your specific request and pricing.

**Accreditation** - Macleay Valley Travel is a fully accredited travel agency under the AFTA (Australian Federation of Travel Agents) ATAS - AFTA Travel Accreditation Scheme. As such, you are assured of a consumer focused and quality assured business, ensuring professional conduct and ethical business practices.

**Health and Fitness** - Macleay Valley Travel recommends that the passenger is reasonably healthy and/or fit to participate in this tour. Persons with a disability requiring special assistance must be accompanied by a companion. Macleay Valley Travel and their representatives cannot provide this service. The Health & Fitness Questionnaire located on the last page of this itinerary needs to be completed in full by each passenger and accompany your booking form. Macleay Valley Travel reserves the right to accept/decline or terminate a passenger's participation in the tour under certain circumstances. It is strongly recommended that you are fully vaccinated against Covid-19, but this is not mandatory. Passengers must comply with any specific Covid-19 requirements that may be imposed by airlines and/or authorities of the destinations visited.

**Twin Share Bookings** - If you do not have a travel partner, but wish to travel at twin share rates, we will try and assign you with another traveller but this is not guaranteed. We assign passengers by their gender, on a first come, first served basis and do not assign twin share passengers according to their age, profession, interests etc. There are risks with sharing a room with a person you do not know, and Macleay Valley Travel accepts no responsibility if you are incompatible with your assigned room mate. Additionally, if you are assigned a travelling companion to share with and they cancel off the tour prior to making the final payment, then you will either be required to pay the single room supplement or we will try our best to assign you with another twin share passenger, if one is available.

**Disclosure of fees or commissions received from third parties** - Macleay Valley Travel Pty Ltd may receive fees, commissions, gifts or financial incentives from third parties under this contract.

**Airline Seating** - All seating requests will be passed onto the airline, however please note that Macleay Valley Travel has no direct control over group seating and requests are not guaranteed.

**Limitation of Liability** - As Macleay Valley Travel acts only as agent for the Airlines, Hotels, Coach Companies etc., providing accommodation, transportation and other services, Macleay Valley Travel shall not be liable or responsible for death or injury to any person or loss or damage to any property including baggage arising out of or connection with any transportation, accommodation or other services, or resulting directly or indirectly from acts of God, fire, breakdown in machinery or equipment, acts of Government or other authorities, de jure or defacto wars, whether declared or not, hostilities, civil disturbances, strikes, riots, thefts, epidemics, pandemics, endemic, quarantines, medical or customs regulations, delays or cancellations caused by changes in schedules or itinerary, or over bookings or defaults or for any causes beyond Macleay Valley Travel's control or any loss or damage resulting from improper or insufficient passports, visas or other documents and neither Macleay Valley Travel, and its servants or employees shall be or become liable or responsible for any additional expenses or liability sustained or incurred by the tour member as a result of the foregoing causes. Additionally, you must meet the entry requirements for each country you visit. Macleay Valley Travel will not be liable if you are denied entry to a country for any reason, including a past criminal history. Macleay Valley Travel reserves the right to decline bookings made for any group tour. Any tour booking confirmation is conditional, contingent on our view of the ability of a person to be able to participate in a tour without the likelihood of conflict between members of a tour whether perceived or actual. Macleay Valley Travel reserves the right to modify the itinerary or the accommodation if circumstances make this necessary, provided that the amended itinerary is of equal value or greater value than that of the original program.

**MACLEAY VALLEY TRAVEL - BOOKING FORM**

PLEASE PRINT DETAILS CLEARLY IN BLOCK LETTERS AND ALSO

**A PHOTOCOPY OF YOUR PASSPORT MUST BE SENT WITH BOOKING FORM**

Name of Tour : \_\_\_\_\_ Departure Date: \_\_\_\_\_

**Passenger 1** (as written in passport) \_\_\_\_\_

Title: **Mr. Mrs. Ms. Miss. Dr.** \_\_\_\_\_ Age: \_\_\_\_\_ Date of Birth: \_\_\_\_\_

**Passenger 2** (as written in passport) \_\_\_\_\_

Title: **Mr. Mrs. Ms. Miss. Dr.** \_\_\_\_\_ Age: \_\_\_\_\_ Date of Birth: \_\_\_\_\_

**Postal Address:** \_\_\_\_\_

\_\_\_\_\_ **PostCode** \_\_\_\_\_ **Email** \_\_\_\_\_

**Telephone / Fax Number:** \_\_\_\_\_ **Mobile** \_\_\_\_\_

Passport Number: \_\_\_\_\_ Expiry Date: \_\_\_\_\_

Passport Number: \_\_\_\_\_ Expiry Date: \_\_\_\_\_

Passport Nationality: \_\_\_\_\_ Preferred Name: \_\_\_\_\_

Passport Nationality: \_\_\_\_\_ Preferred Name: \_\_\_\_\_

(Passport must have 6 months validity from the time of tour completion)

**Single room / Twin beds / Double bed:** (Room type is subject to availability)

Type of cabin: **MAIN DECK / UPPER DECK**

Circle which airport you wish to depart from: SYDNEY / MELBOURNE / BRISBANE

Special Dietary Requests – Passenger 1: \_\_\_\_\_ Passenger 2: \_\_\_\_\_

Optional Extensions: \_\_\_\_\_

Any existing medical conditions – Passenger 1: \_\_\_\_\_ Passenger 2: \_\_\_\_\_

In case of emergency, please notify :

Name: \_\_\_\_\_ Relationship: \_\_\_\_\_

Address: \_\_\_\_\_

Phone Number: \_\_\_\_\_

Please return this sheet with your non-refundable deposit of \$400 per person & the health & fitness form.

**DECLARATION. I have read and understand fully the booking conditions and I accept them.**

Signature: \_\_\_\_\_ Date: \_\_\_\_\_

**A passport copy is required to verify the spelling of your name. If not provided and the information we have for the airline is incorrect and the ticket is issued, then the airline will charge a reissue fee.**

## HEALTH & FITNESS QUESTIONNAIRE

Macleay Valley Travel strives to make our tours enjoyable experiences for all passengers, however some countries and tour services lack the standards that you can typically expect in Australia.

To help ensure your personal safety and enjoyment on tour, please answer the following questions. The information you provide will be treated confidentially and will be used to check that the transportation, accommodation and facilities on tour are suitable for you:

1. Do you have any allergies? Yes / No

If yes, please provide details and severity: \_\_\_\_\_

2. Can you walk 500 metres to 1km in distance comfortably and unaided?

Yes / No

3. Can you negotiate uneven, undulating and sometimes challenging terrain?

Yes / No

If no, please provide details about these

limitations: \_\_\_\_\_

4. Do you use a mobility aid? Yes / No

If yes, please provide details: \_\_\_\_\_

5. Are you travelling with a companion or carer who is able to provide all the assistance you need to enter buildings, disembark and embark ships, aircraft, coaches, small boats and assist you on excursions? Yes / No

If yes, please provide the name of your carer/companion and your relationship to them: \_\_\_\_\_

6. Are you taking any medical equipment to assist you? Yes / No

If yes, please provide details: \_\_\_\_\_

7. Do you suffer from any condition which may cause you to experience memory loss or become disoriented? Yes / No

If yes, please provide details: \_\_\_\_\_

8. Are you asthmatic or do you have other breathing difficulties? Yes / No

If yes, please provide details (travelling to high altitudes is not recommended): \_\_\_\_\_

9. Do you require supplementary oxygen? Yes / No

10. Are you currently taking medication? Yes / No

If yes, are you able to administer your own medication? Yes / No

11. If you have any other medical information that is not covered in the previous questions, please provide a description here: \_\_\_\_\_

The information you supply us will be passed onto relevant travel suppliers who will do their best accommodate you. However, it is very important to remember that meeting your needs cannot be guaranteed, especially when travelling to third world countries.

### DISCLAIMER

I confirm that the information provided on this questionnaire is both true and correct and I understand that there is no guarantee that all these needs will or can be met. I agree that Macleay Valley Travel may offer a recommendation with regard to fitness to travel, based on the information I have provided. I also understand that this information may be passed onto those responsible for supplying the land arrangements for my travel, and that my information will not be communicated to any party which is not directly responsible or otherwise associated with my travel arrangements. I further confirm and agree that should I choose not to disclose information which subsequently requires me to return or be returned home from a tour or cruise, Macleay Valley Travel is not responsible for any costs associated with cancellation penalties, airfares, land transportation or any other related hardship. Please note that a refund for lost touring cannot be claimed. I acknowledge that it is my responsibility to update the information I provided to Macleay Valley Travel immediately should my circumstances change.

Name: \_\_\_\_\_

Signature: \_\_\_\_\_

Date: \_\_\_\_\_

## HEALTH & FITNESS QUESTIONNAIRE

Macleay Valley Travel strives to make our tours enjoyable experiences for all passengers, however some countries and tour services lack the standards that you can typically expect in Australia.

To help ensure your personal safety and enjoyment on tour, please answer the following questions. The information you provide will be treated confidentially and will be used to check that the transportation, accommodation and facilities on tour are suitable for you:

1. Do you have any allergies? Yes / No

If yes, please provide details and severity: \_\_\_\_\_

2. Can you walk 500 metres to 1km in distance comfortably and unaided?

Yes / No

3. Can you negotiate uneven, undulating and sometimes challenging terrain?

Yes / No

If no, please provide details about these

limitations: \_\_\_\_\_

4. Do you use a mobility aid? Yes / No

If yes, please provide details: \_\_\_\_\_

5. Are you travelling with a companion or carer who is able to provide all the assistance you need to enter buildings, disembark and embark ships, aircraft, coaches, small boats and assist you on excursions? Yes / No

If yes, please provide the name of your carer/companion and your relationship to them: \_\_\_\_\_

6. Are you taking any medical equipment to assist you? Yes / No

If yes, please provide details: \_\_\_\_\_

7. Do you suffer from any condition which may cause you to experience memory loss or become disoriented? Yes / No

If yes, please provide details: \_\_\_\_\_

8. Are you asthmatic or do you have other breathing difficulties? Yes / No

If yes, please provide details (travelling to high altitudes is not recommended): \_\_\_\_\_

9. Do you require supplementary oxygen? Yes / No

10. Are you currently taking medication? Yes / No

If yes, are you able to administer your own medication? Yes / No

11. If you have any other medical information that is not covered in the previous questions, please provide a description here: \_\_\_\_\_

The information you supply us will be passed onto relevant travel suppliers who will do their best accommodate you. However, it is very important to remember that meeting your needs cannot be guaranteed, especially when travelling to third world countries.

### DISCLAIMER

I confirm that the information provided on this questionnaire is both true and correct and I understand that there is no guarantee that all these needs will or can be met. I agree that Macleay Valley Travel may offer a recommendation with regard to fitness to travel, based on the information I have provided. I also understand that this information may be passed onto those responsible for supplying the land arrangements for my travel, and that my information will not be communicated to any party which is not directly responsible or otherwise associated with my travel arrangements. I further confirm and agree that should I choose not to disclose information which subsequently requires me to return or be returned home from a tour or cruise, Macleay Valley Travel is not responsible for any costs associated with cancellation penalties, airfares, land transportation or any other related hardship. Please note that a refund for lost touring cannot be claimed. I acknowledge that it is my responsibility to update the information I provided to Macleay Valley Travel immediately should my circumstances change.

Name: \_\_\_\_\_

Signature: \_\_\_\_\_

Date: \_\_\_\_\_